



The Place for Ideas

RIBELLE

Design by Favaretto & Partners

Sostanziale e sapientemente intrecciata. Ribelle rompe tutti gli schemi e riscrive il concetto di seduta. La sua struttura verniciata la rende adatta ad ambienti indoor e outdoor, e la sua sobrietà ne fa un oggetto da utilizzare in contesti community con uno stile fortemente urbano, underground. Sei finiture diverse per una seduta dal taglio originale composta interamente d'acciaio, in grado di coniugare comfort e funzionalità.

Cleverly interwoven substance. Ribelle breaks all the molds and redefines seating. Its varnished structure makes it suitable for both indoor and outdoor spaces, while its clean lines make it suitable for community environments with an underground urban feel. Six different finishes allow you to personalize the steel chair, the perfect combination of comfort and function.





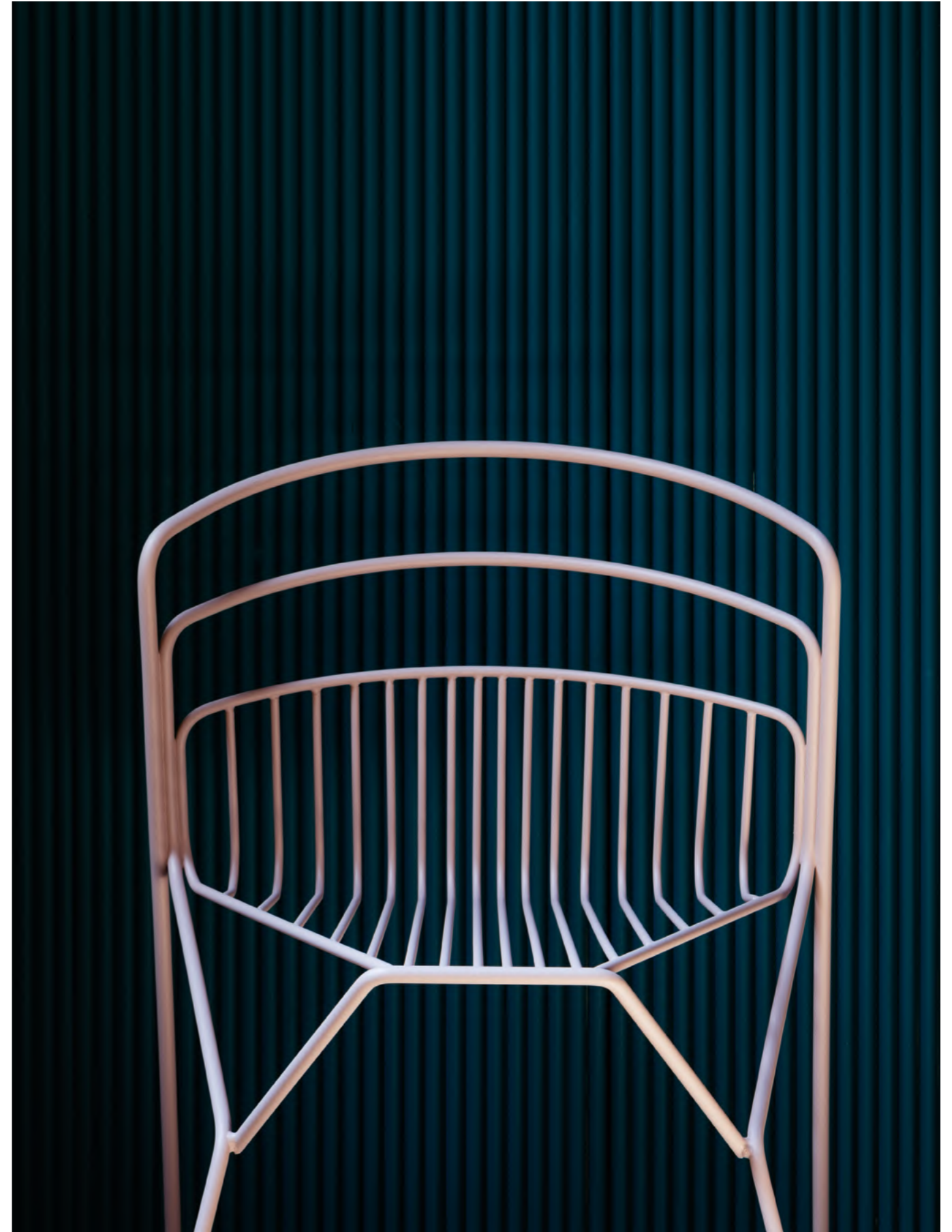
RIBELLE
Modello R11/ R11 model



RIBELLE
Modello R15/ R15 model



RIBELLE
Modello RI1/ RI1 model





RIBELLE

Design by Favaretto & Partners
Breakout/ Breakout seating



R11

L 52 x W 53 x H 77 cm



R15

L 50 x W 53 x H 97 cm

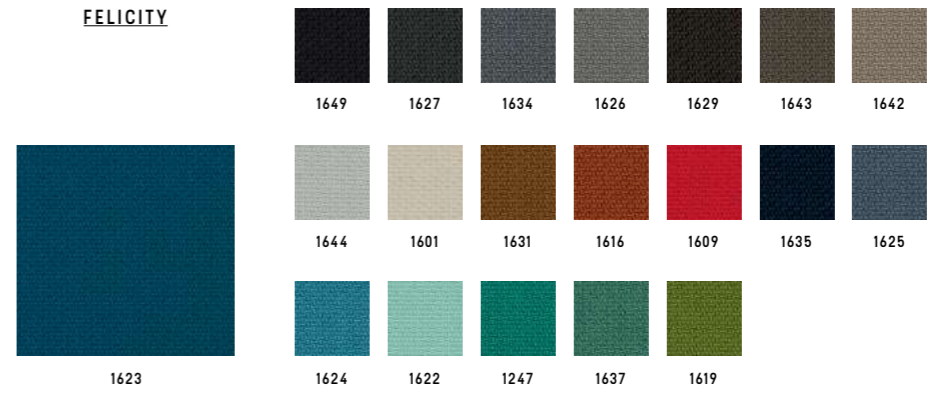
MATERIALI

MATERIALI/ MATERIALS



GABRIEL

FELICITY

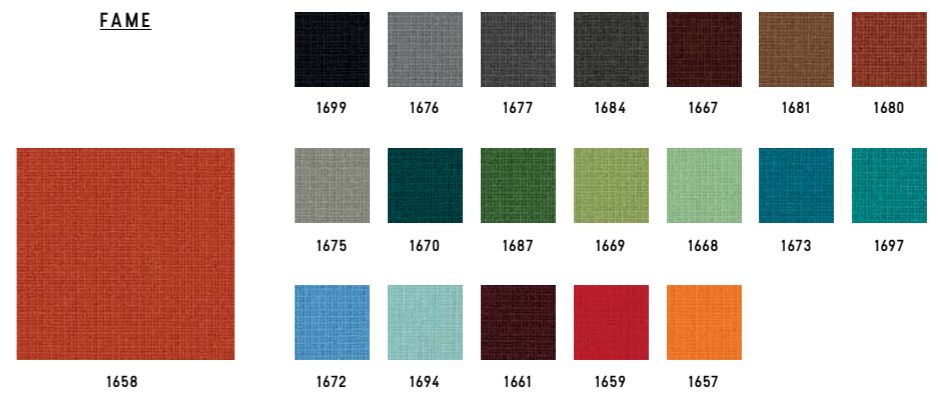


Categoria/ Category
Composizione/ Composition
Note/ Notes

C
100% polyester
100% recycled fabric



FAME



Categoria/ Category
Composizione/ Composition

D
95% New Zeland wool + 5% polyamide



BREEZE FUSION



Categoria/ Category
Composizione/ Composition

K
88% New Zeland wool + 12% polyamide



GABRIEL

SAVOY



Categoria/ Category **K**
Composizione/ Composition **100% Trevira CS**



STEP MELANGE

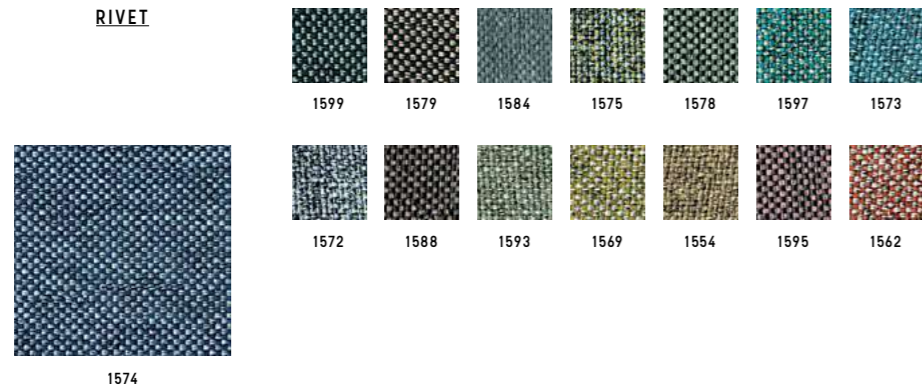


Categoria/ Category **D**
Composizione/ Composition **100% Trevira CS**



CAMIRA

RIVET



Categoria/ Category **C**
 Composizione/ Composition 100% reprove
 Note/ Notes 100% recycled fabric



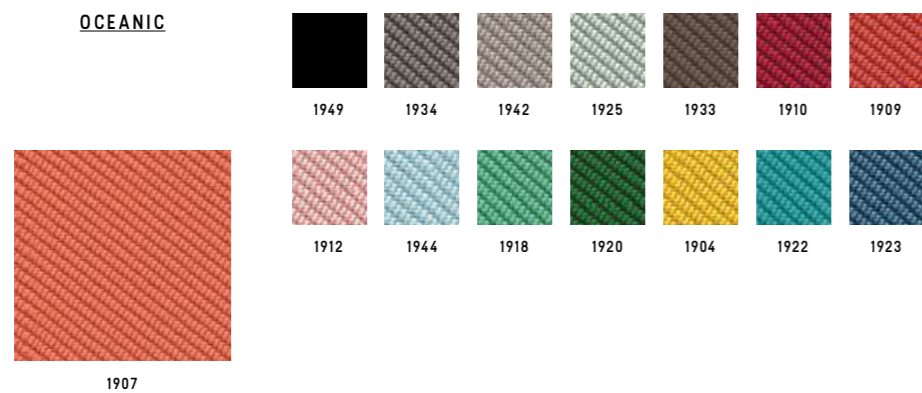
BLAZER



Categoria/ Category **K**
 Composizione/ Composition 100% virgin wool



OCEANIC



Categoria/ Category **K**
 Composizione/ Composition 100% post-consumer recycled polyester, including 50% SEAQUAL yarn



KVADRAT

RELATE



Categoria/ Category **D**
 Composizione/ Composition 100% trevira CS
 Note/ Notes 100% recycled fabric



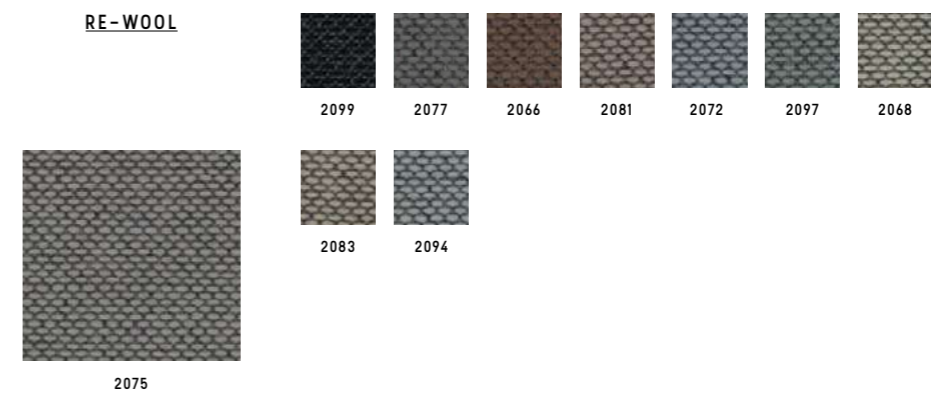
REMIX 3



Categoria/ Category **K**
 Composizione/ Composition 90% new wool worsted + 10% nylon



RE-WOOL

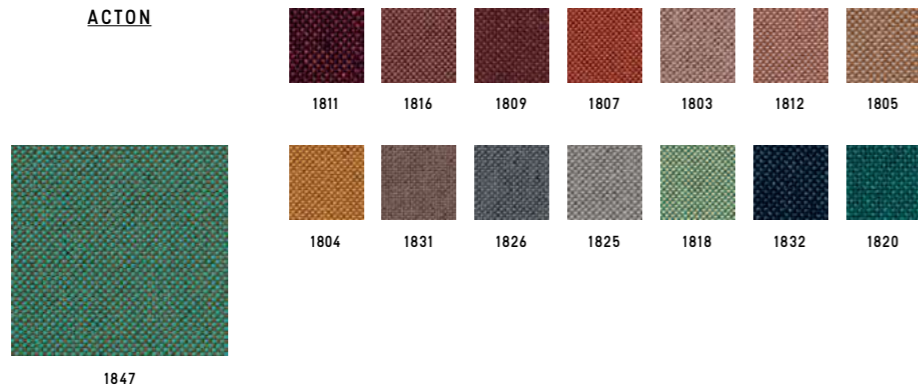


Categoria/ Category **K**
 Composizione/ Composition 45% recycled wool + 45% new wool worsted + 10% nylon



VESCOM

ACTON



Categoria/ Category **D**
 Composizione/ Composition 100% polyester



LIMONTA

TRESIGALLO



Categoria/ Category **K**
 Composizione/ Composition 22% Acrylic + 22% wool + 22% polyester
 13% cotton + 14% viscose + 17% wool



G.S.

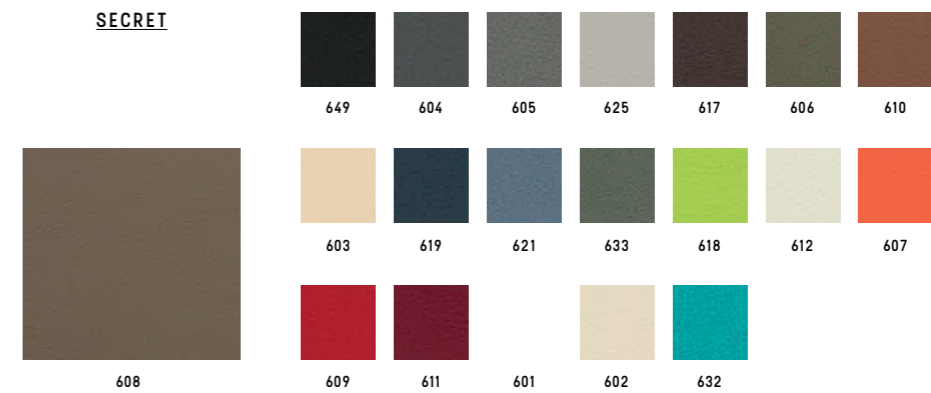
SURROUND



Categoria/ Category **B**
 Composizione/ Composition 87,5% polyvinylchloride (PVC) + 12,5% cotton
 Note/ Notes Antibacterial



SECRET



Categoria/ Category **C**
 Composizione/ Composition 76% polyvinylchloride (PVC) + 2% polyurethane (PU) + 22% polysulfone (PES)



GORGEUS



Categoria/ Category **D**
 Composizione/ Composition 100% poliestere FR



CHIOCCARELLO

DISCO COEX



1402



Categoria/ Category
Composizione/ Composition

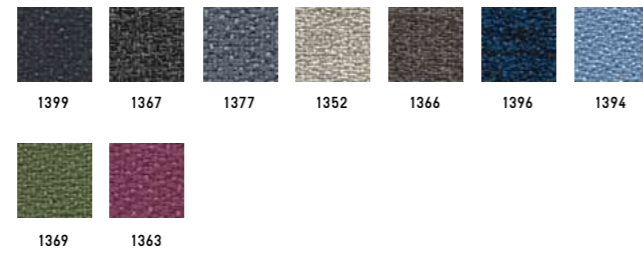
D
70% cotton + 20% acrylic + 5% viscose
5% linen, 0% formaldehyde



EXPO



1379

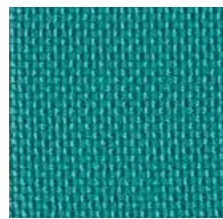


Categoria/ Category
Composizione/ Composition
Note/ Notes

B
100% propitex Fr bacteriostatic
Bacteriostatic



MADRID



L097



Categoria/ Category
Composizione/ Composition

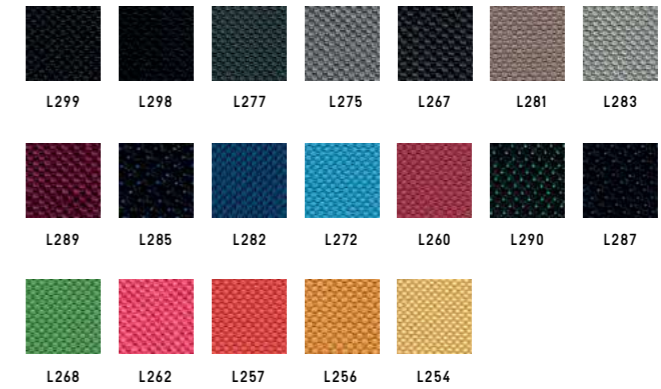
A
100% polypropilene FR



SALÒ



L259



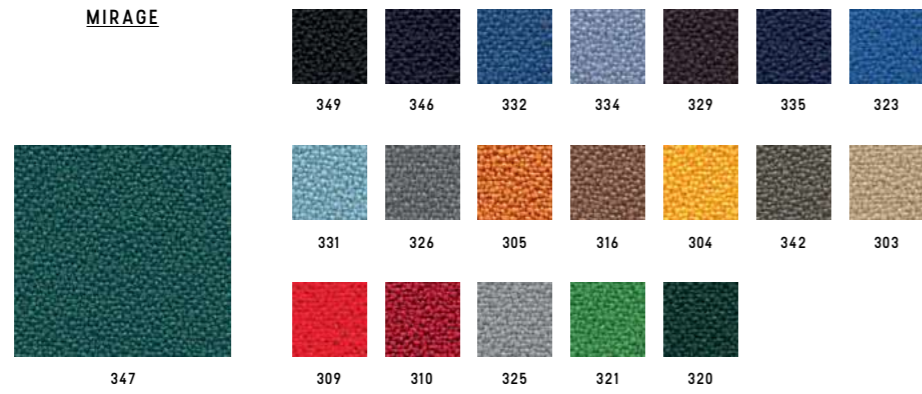
Categoria/ Category
Composizione/ Composition

B
100% polyester FR



PUGI

MIRAGE

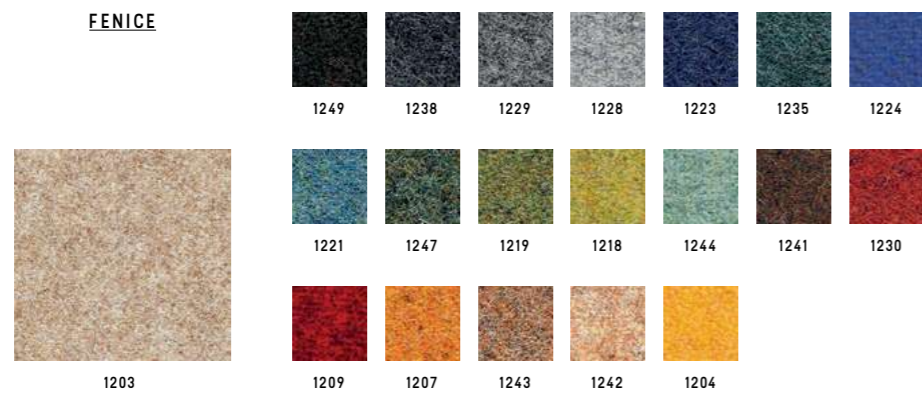


Categoria/ Category
Composizione/ Composition

B
100% polyester FR



FENICE



Categoria/ Category
Composizione/ Composition

C
75% wool + 25% polyamide



BISENTIUM



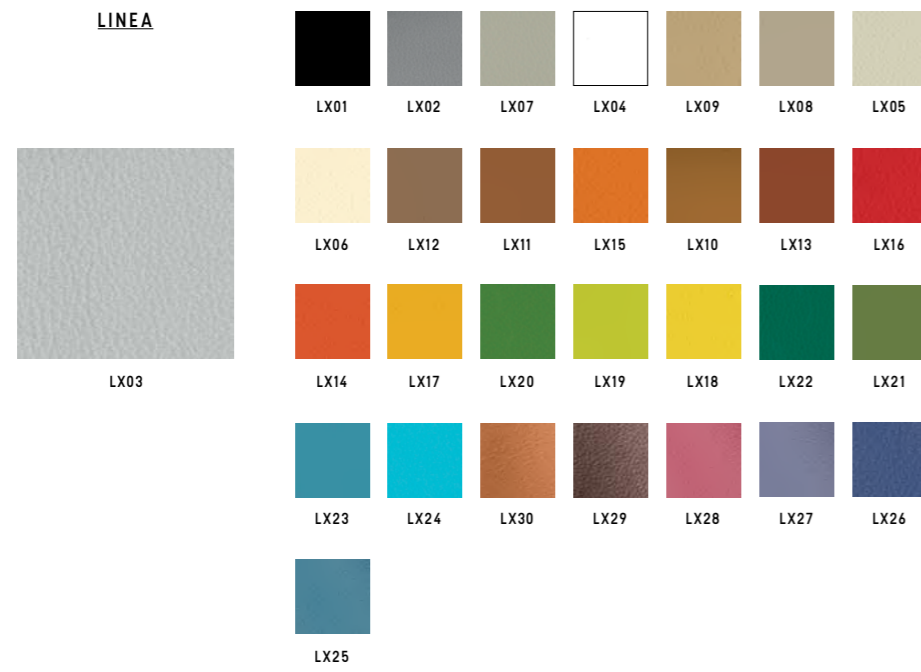
Categoria/ Category
Composizione/ Composition

K
30% wool + 28% polyester + 26% polyamide
16% silk



MASTROTTO

LINEA

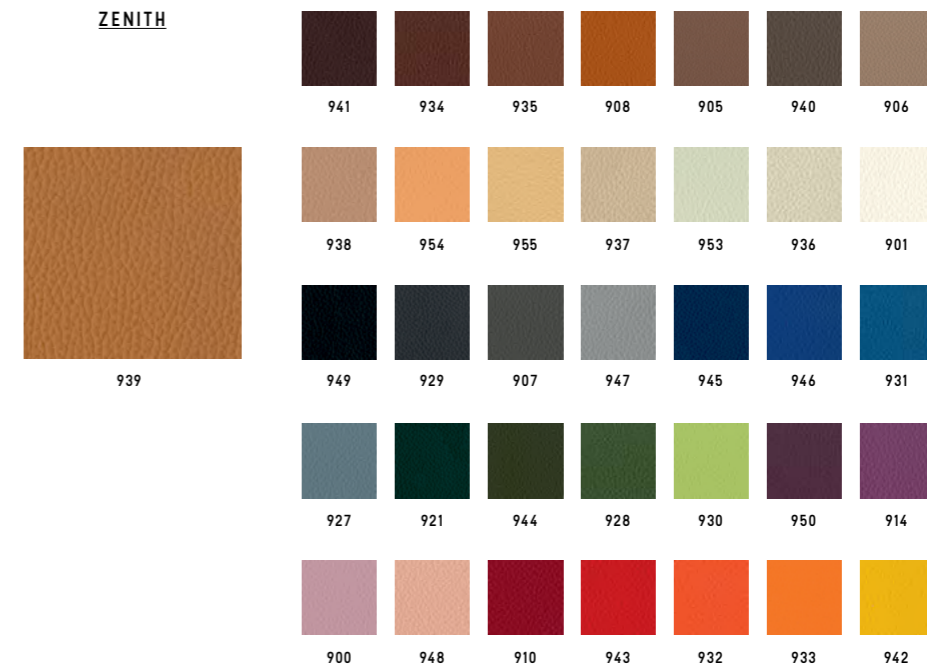


Categoria/ Category
Composizione/ Composition

TOP (pieno fiore)
Bovine leather



ZENITH



Categoria/ Category
Composizione/ Composition

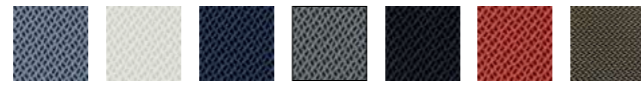
TP
Bovine leather



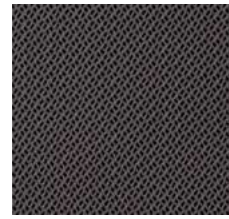


RETI TRIDIMENSIONALE

RHYTHM



TAZ TBI TBL TGR TNE TRO TTO



TAN

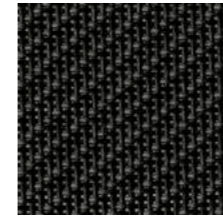


TVD

Categoria/ Category D
 Composizione/ Composition 100% polyester



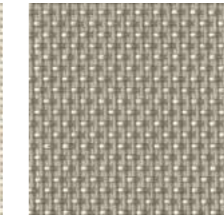
CATEGORIA L/
 CATEGORY L



849



801



825

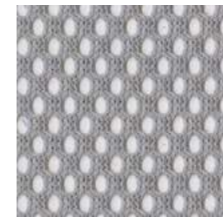
Categoria/ Category L
 Composizione/ Composition 73% PVC + 27% poliestere/ 73% PVC + 27% polyester
 849-801: Light, Nulite, Smartlight, Pop,
 825: Light, Nulite



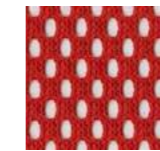
CATEGORIA R/
 CATEGORY R



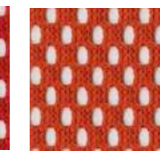
NE BI VD BL



GR



RO

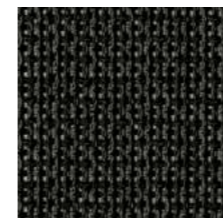


AR

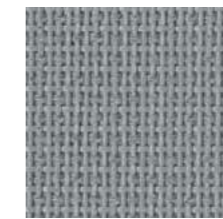
Categoria/ Category R
 Composizione/ Composition 100% poliestere/ 100% polyester
 Solo per Aire Jr, Post, Pop, Switch/
 Only for Aire Jr, Post, Pop, Switch



CATEGORIA Z/
 CATEGORY Z



NE



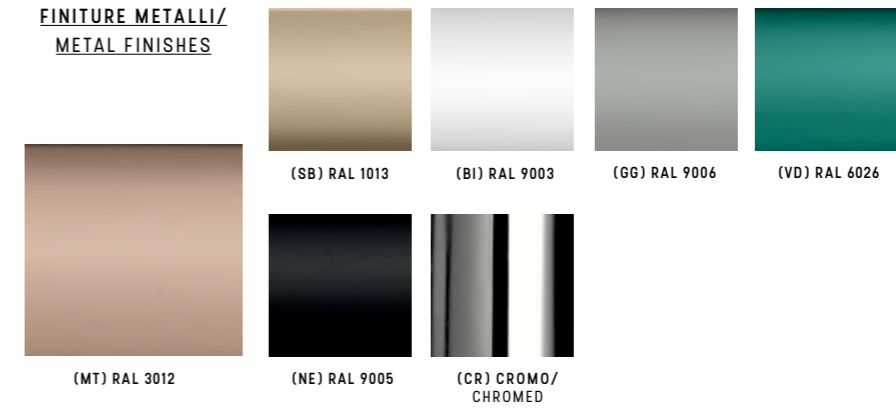
GR

Categoria/ Category Z
 Composizione/ Composition 60% PVC + 40% poliestere/ 60% PVC + 40% polyester
 Solo per Overtime Evo, Extralight/
 Only for Overtime Evo, Extralight





**FINITURE METALLI/
METAL FINISHES**



Categoria/ Category

FE

**PLASTICHE/
PLASTICS**



Categoria/ Category

PE

**LEGNO/
WOOD**



Faggio/ Beech

Rovere/ Oak

Noce/ Walnut

Wenge'

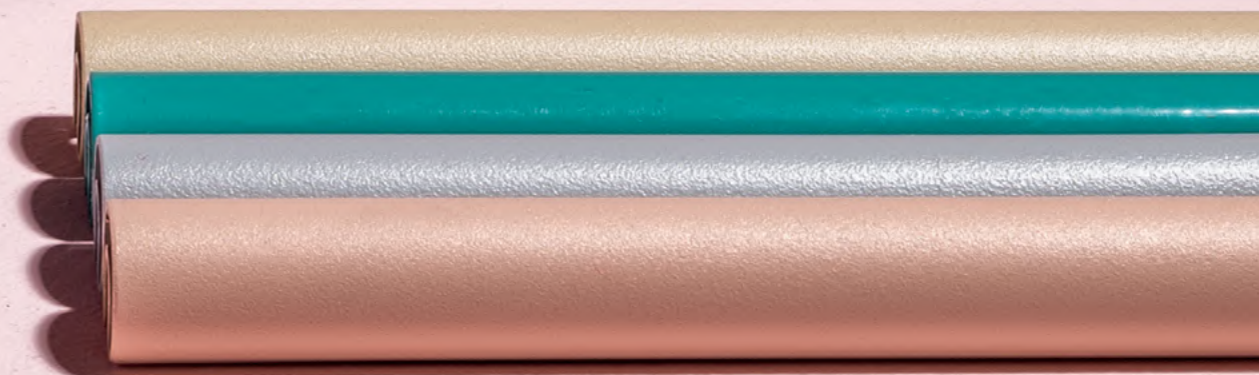
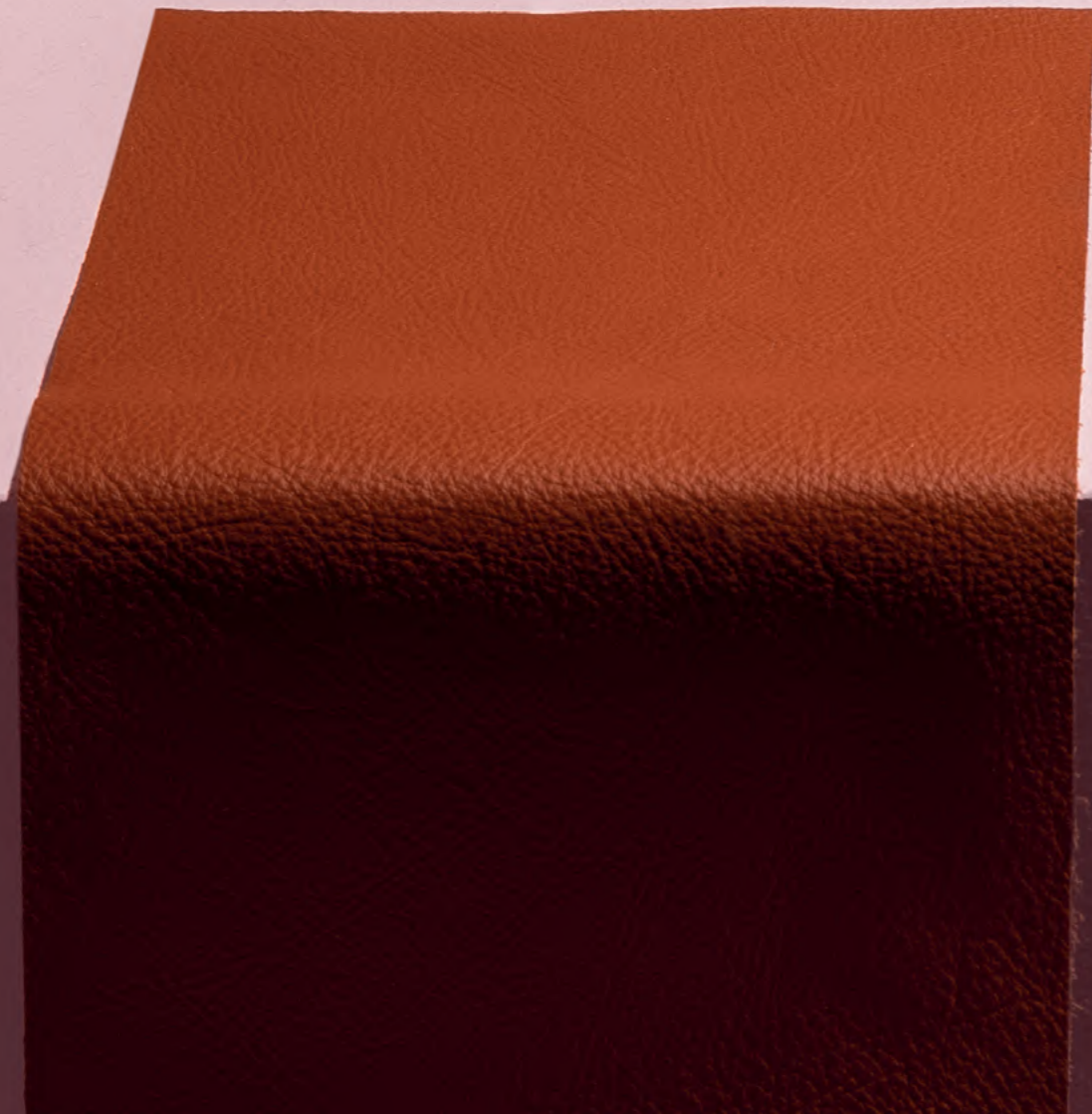
Standard

A progetto/ For customized projects

Categoria/ Category
Composizione/ Composition

LE

Legno massello di faggio in colore naturale/ Solid beech wood natural finish.
Legno massello di rovere con verniciatura di tipo acrilico in vari colori/ Solid oak wood natural finishes.



Luxy.com